




# MM WEEKLY PARENT PLANNER

WEEK OF DEC 9-13



MONDAY	<p>5CF - In School Field trip - Lino Printing 10:30-12            5V - In School Field Trip - Lino Printing 1:15-2:45pm            School Council Meeting 7-9pm</p>
TUESDAY	<p>Klf &amp; KJam - St.Albert Public Library - Christmas around the World 9:10-11:25am            KJpm &amp; KWF - St.Albert Public Library - Christmas around the World 12:50-2:45pm            Glee Club - 12:05-12:35</p>
WEDNESDAY	<p>Safe Spaces Club 12:05-12:35            Jr. Choir - "Come and See" - music room 12:05-12:35</p>
THURSDAY	<p><b>HOT LUNCH - TACO TIME/BOOSTER JUICE</b>            Glee Club Practice -12:05-12:35            Wings of Fire Book Club - 2nd recess            LEGO CLUB - 12:05-12:35PM</p>
FRIDAY	<p><b>SKATE DAY! ALL GRADES TO KINEX &amp; JAROME IGINILA ARENAS</b></p> 

## Looking Ahead

Dec 20 - Early dismissal @ 12:25p

## Contact Info



mm@spschools.org



780-458-0205

## MM School Office Notices:

School Fees are now due, please log into your powerschool parent portal to see your balance owing and to pay online. The office will accept cash and cheques.

Please sign the MM Deer Ridge Waiver online, this is for students to walk around the neighborhood with their teacher/class. This is found under the fee section.

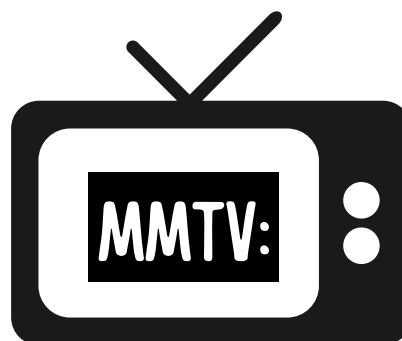
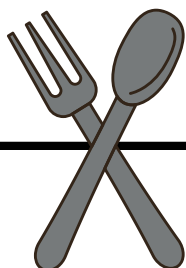
**Skate Day Waivers are now online to complete, under the fee section in powerschool. Please complete by Dec 9.**

Please click on the link below to get into powerschool

**[Powerschool Parent Portal Log in](#)**

## Waste free Lunches

The office will no longer be providing plastic cups or cutlery for students to use. Please make sure your student has packed a water bottle and the necessary utensils for their lunch.



Welcome to another year of MMTV! You can catch our weekly news on Mondays by subscribing to our [Muriel Martin TV Youtube](#) channel. Our news is hosted by our talented grade 6 students and produced by Mr. Grice.

## MM Musical Moments



**The MM music website is ready to go and will always have the most up to date information for our music programming here at MM.**

**<https://sites.google.com/spschools.org/mmmusic/home>**

**Please ensure all glee club fees are paid.  
All honour band permission forms need to be returned ASAP**

**Some dates for all to note are:  
January 23rd, 2025 - Grade 6 Band/Glee Club Winter Concert  
March 15th, 2025 - Muriel Martin Oil Kings Night  
April 17th, 2025 - Grade 6 Band/Glee Club Year End Concert  
May 15th, 2025 - MM Showcase - More details to follow**

## Phys Ed News:

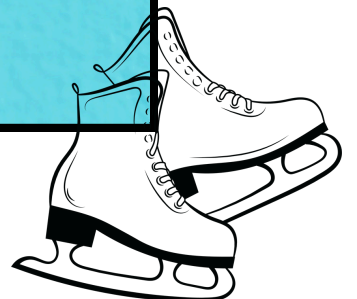
**Skate day for all classes is Friday Dec 13. No cost for this activity!**

**All Students need skates, helmets and gloves**

**We do have quite a few skates to lend out if needed, on a first come first serve basis, if your student needs to borrow skates please come to the gym during lunch recess Dec 9-12 to get fitted.**

**We do not have helmets to lend out, needs to be CSA approved, ski helmets are acceptable, bike helmets are not allowed.**

**Waiver forms are online in powerschool, please complete by Dec 9**

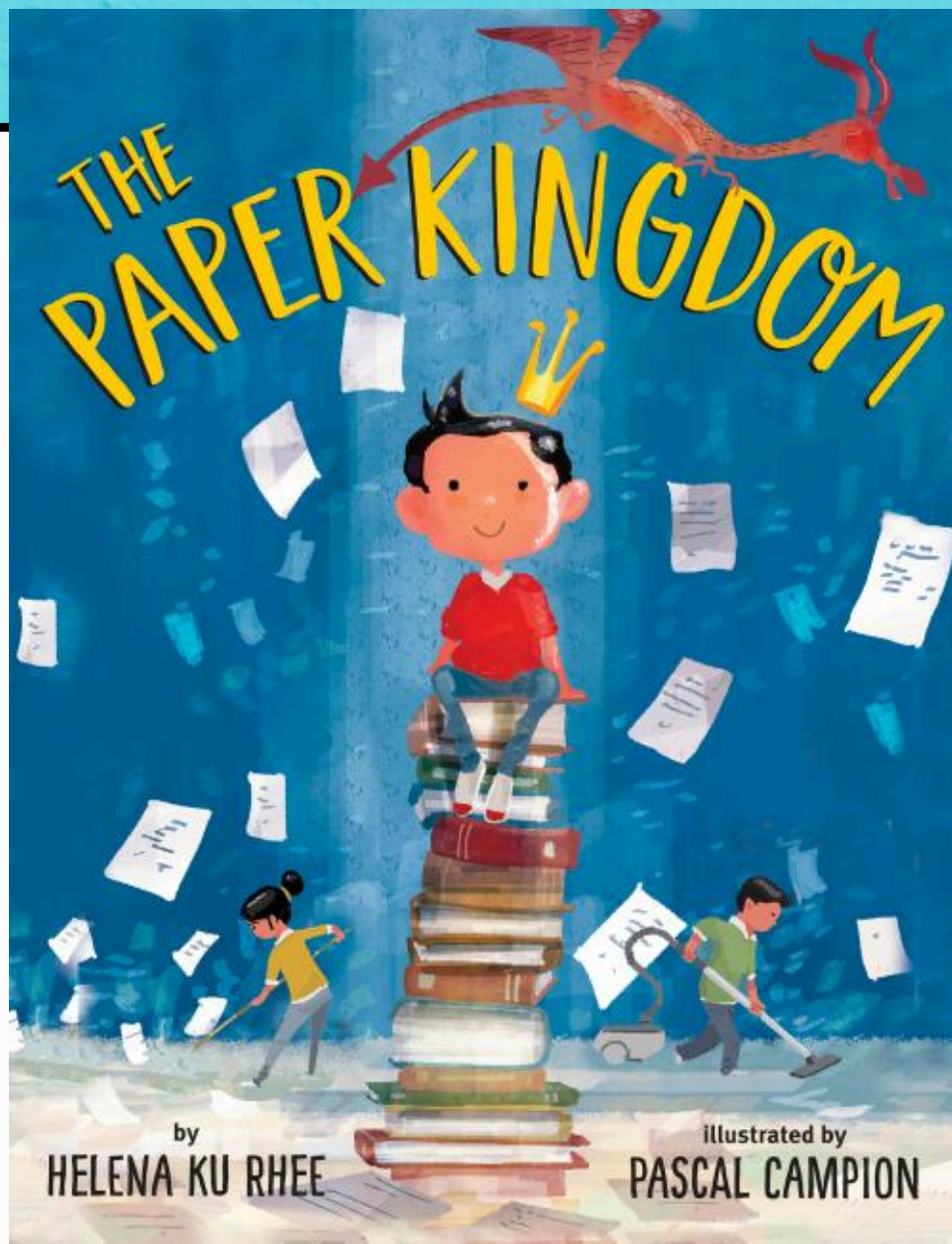


## Inclusion Spotlight

Our mandate in schools is to provide a safe, caring, and welcoming learning environment for all students, staff and the MM community. We would like to promote inclusion through love, kindness and understanding. Inclusion means that we choose to be kind, and that we try to understand the feelings of others. It means that we encourage and support others, and that we are open to learning about others' differences. Whether we realize it or not, members of our school community still face prejudice and inequality, discrimination and injustice. At MM we RAWR: we choose respect and responsibility, and we can choose to be inclusive.

This Inclusion Spotlight is a collaborative effort by parents, staff and students of MM to be more inclusive and to develop empathy. We plan to share tools, tips, and books that will encourage reflection and conversation, and provide support for all of us to create a safe, caring, welcoming, and inclusive community at our school

As we highlight disparity this month, we would like to share another story. "The Paper Kingdom" is written by Helena Ku Rhee. The author shares the theme of kindness and recognition that everyone works hard. We hope that you have a chance to listen to the story together by clicking on the image below.



## Cell Phones:

We would like to remind families that student cell phones or Smart watches are not to be used on the school property during the school day from beginning at 8:40 when supervision starts. This includes recess & lunch. When students bring these devices to school, they are expected to have them turned off and in their backpack / locker. Should your student need to contact you during the day, or you them, the school phone system is available. Please have this conversation with your student. Your cooperation and partnership are greatly appreciated.



## Absence Reporting:

To report an absence, we prefer you use our online absence reporting form and fill it out with as much detail as possible. You can find it on the Muriel Martin Website or go directly to it using the following link

<https://murielmartin.spschools.org/parents/absence-reporting>

## Late/Leaving Early

If your student is late please bring them to the office to be signed in. If you need to pick up your student during the day, please notify the office before you come. This way we can have your student ready and waiting. When you arrive at the school come into the office to sign them out. Please note, students are not allowed to walk home alone during school hours.

## Parking:

Between 8 AM and 4 PM, please do not use the staff parking lot to drop off or pick up your student. There is plenty of parking in the neighborhood and around the school where you can park and walk your student to their designated door. The other option is to use our drop off / bus lane in front of the school. Please note, you should not be parking in the drop off / bus lane. This area is meant for students to quickly exit or enter your vehicle. Busses get priority in this lane, if you see them coming please make room for them as quickly as possible.

**Accessible Parking:** We have two designated accessible parking areas, one in the staff parking lot, and one in the drop off / bus lane. Only families who have handicap parking permits are allowed to use these areas.





MM'S WEEK OF

# WELL WISHES

---

DEC 9TH- 13TH

---

DEC 9TH: WE WISH YOU WARMTH  
BRING IN TOQUES & MITTENS

DEC 10TH: WE WISH YOU A HEALTHY BREAKFAST  
BRING IN NON-PERISHABLE BREAKFAST ITEMS

DEC 11TH: WE WISH YOU A NEW GIFT  
BRING IN A KIDS TOY/GIFT WRAP/TAPE

DEC 12TH: WE WISH YOU A NUTRITIOUS SNACK  
BRING IN NON-PERISHABLE LUNCH SNACKS

DEC 13TH: WE WISH YOU WELLNESS  
BRING IN PERSONAL CARE ITEMS





# Muriel Martin Get Involved!

DECEMBER 6, 2024



## THANK YOU

Thanks to everyone who participated in the Salisbury at Enjoy gift card fundraiser. We raised over **\$300**.

Another thanks to everyone who purchased Dino Spirit Wear. We raised over **\$2,000!**

Healthy Hunger

## HOT LUNCH!

LAST ONE FOR 2024



TACO TIME ON DEC. 12  
ORDER BY DEC. 8



## SKIPTHEDEPOT

Sign up and schedule a bottle pick-up. Then, donate to our school.

Use Code: **MURIEL**  
[app.skipthedepot.com/murielmartin](https://app.skipthedepot.com/murielmartin)

You can also take your bottles to **Campbell Park Bottle Depot** and request the refund go to **Muriel Martin Fundraising Society**

## 2025 FUNDRAISERS TO LOOK FOR

Spring Art Cards and Easter Purdy's Fundraiser



Fundraising Social: **Dec 9 | 8 PM** in the music room

**MURIELMARTINFUNDRAISING@GMAIL.COM**

Join the Muriel Martin Parent Community Facebook group  
[facebook.com/groups/271444916334270/](https://facebook.com/groups/271444916334270/)