



MM WEEKLY PARENT PLANNER

WEEK OF DEC 2-6



MONDAY	NO SCHOOL - PD DAY
TUESDAY	Dino Spirit Day - Wear school colors Glee Club Practice 12:05-12:35pm 5CF - In School Field Trip - Print Making
WEDNESDAY	Safe Spaces Club 12:05-12:35 Healthy Hunger - Kernels Popcorn
THURSDAY	HOT LUNCH - McDonald's Glee Club Practice -12:05-12:35 Wings of Fire Book Club - 2nd recess 2/3LSf - Fused Glass Workshop 11-12 2Sf - Fused Glass Workshop - 1-2pm
FRIDAY	3Df- Fused Glass Workshop 11-12 3Gf- Fused Glass Workshop - 1-2pm Gr. 6 Band - Night of Music- Practice @ 12:05pm

Looking Ahead

Dec 13 - Skate Day
Dec 20 - Early dismissal @ 12:25p

Contact Info



mm@spschools.org



780-458-0205

MM School Office Notices:

School Fees are now due, please log into your powerschool parent portal to see your balance owing and to pay online. The office will accept cash and cheques.

Please sign the MM Deer Ridge Waiver online, this is for students to walk around the neighborhood with their teacher/class. This is found under the fee section.

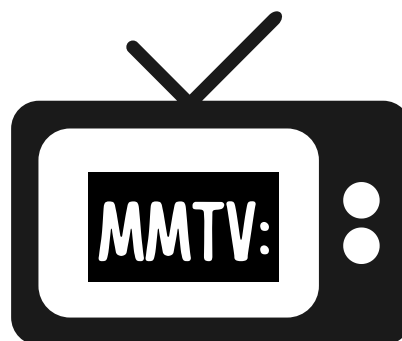
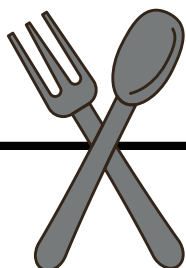
Skate Day Waivers are now online to complete, under the fee section in powerschool. Please complete by Dec 9.

Please click on the link below to get into powerschool

[Powerschool Parent Portal Log in](#)

Waste free Lunches

The office will no longer be providing plastic cups or cutlery for students to use. Please make sure your student has packed a water bottle and the necessary utensils for their lunch.



Welcome to another year of MMTV! You can catch our weekly news on Mondays by subscribing to our [Muriel Martin TV Youtube](#) channel. Our news is hosted by our talented grade 6 students and produced by Mr. Grice.

MM Musical Moments

The MM music website is ready to go and will always have the most up to date information for our music programming here at MM.

<https://sites.google.com/spschools.org/mmmusic/home>

Gr. 6 Band Students for Night of Music, information and permission slips are coming home today (Nov 29), due back on Dec 6.

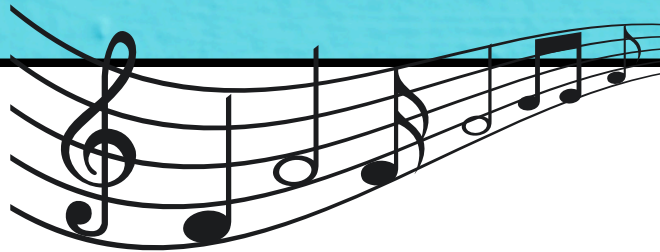
Some dates for all to note are:

January 23rd, 2025 - Grade 6 Band/Glee Club Winter Concert

March 15th, 2025 - Muriel Martin Oil Kings Night

April 17th, 2025 - Grade 6 Band/Glee Club Year End Concert

May 15th, 2025 - MM Showcase - More details to follow



Phys Ed News:

Skate day for all classes is Friday Dec 13. No cost for this activity!

All Students need skates, helmets and gloves

We do have quite a few skates to lend out if needed, on a first come first serve basis, if your student needs to borrow skates please come to the gym during lunch recess Dec 9-12 to get fitted.

We do not have helmets to lend out, needs to be CSA approved, ski helmets are acceptable, bike helmets are not allowed.

Waiver forms are online in powerschool, please complete by Dec 9



Inclusion Spotlight

Our mandate in schools is to provide a safe, caring, and welcoming learning environment for all students, staff and the MM community. We would like to promote inclusion through love, kindness and understanding. Inclusion means that we choose to be kind, and that we try to understand the feelings of others. It means that we encourage and support others, and that we are open to learning about others' differences. Whether we realize it or not, members of our school community still face prejudice and inequality, discrimination and injustice. At MM we RAWR: we choose respect and responsibility, and we can choose to be inclusive.

This Inclusion Spotlight is a collaborative effort by parents, staff and students of MM to be more inclusive and to develop empathy. We plan to share tools, tips, and books that will encourage reflection and conversation, and provide support for all of us to create a safe, caring, welcoming, and inclusive community at our school. We welcome suggestions for topics, themes, or resources to spotlight.

December can be a difficult time for many members of our community and so we thought that highlighting disparity this month would be a place to start. As you are having conversations about the giving season, you may wish to read "Saturday at the Food Pantry" by Diane O'Neill. O'Neill tells a beautiful story about helping each other and reminds us that everyone needs help sometimes. We invite you to have a listen by clicking on the image below.



Cell Phones:

We would like to remind families that student cell phones or Smart watches are not to be used on the school property during the school day from beginning at 8:40 when supervision starts. This includes recess & lunch. When students bring these devices to school, they are expected to have them turned off and in their backpack / locker. Should your student need to contact you during the day, or you them, the school phone system is available. Please have this conversation with your student. Your cooperation and partnership are greatly appreciated.



Absence Reporting:

To report an absence, we prefer you use our online absence reporting form and fill it out with as much detail as possible. You can find it on the Muriel Martin Website or go directly to it using the following link

<https://murielmartin.spschools.org/parents/absence-reporting>

Late/Leaving Early

If your student is late please bring them to the office to be signed in. If you need to pick up your student during the day, please notify the office before you come. This way we can have your student ready and waiting. When you arrive at the school come into the office to sign them out. Please note, students are not allowed to walk home alone during school hours.

Parking:

Between 8 AM and 4 PM, please do not use the staff parking lot to drop off or pick up your student. There is plenty of parking in the neighborhood and around the school where you can park and walk your student to their designated door. The other option is to use our drop off / bus lane in front of the school. Please note, you should not be parking in the drop off / bus lane. This area is meant for students to quickly exit or enter your vehicle. Busses get priority in this lane, if you see them coming please make room for them as quickly as possible.

Accessible Parking: We have two designated accessible parking areas, one in the staff parking lot, and one in the drop off / bus lane. Only families who have handicap parking permits are allowed to use these areas.





Muriel Martin Get Involved!

NOVEMBER 28, 2024



MCDONALD'S
DEC. 5
ORDER BY DEC. 1

Healthy
Hunger

HOT LUNCH!



KERNELS
DEC. 4
ORDER BY DEC. 2

HOT LUNCH

Upcoming Orders

Kernels Popcorn on Dec. 4

Order by Dec. 2

McDonalds on Dec 5

Order By Dec. 1

BOSTON PIZZA RECEIPTS

Operation Education

Submit your Boston Pizza receipts to the school office by **Dec. 17** and we earn 5% cash back!

PLAYGROUND REPLACEMENTS

The green and red playground will be approaching the end of its lifecycle in the next five years. As playground replacements are averaging over \$300,000 these days, it takes a lot of planning and fundraising to ensure our students will have great places to play into the future.

The Fundraising Society is looking for people to start the planning process, scoping out what is possible for that area, looking at grants to be applied for, and starting some playground-specific fundraisers in the coming years to set us up for success. If you are interested in being a project lead or working as a team on this unique project, please email murielmartinfundraising@gmail.com for more information.

Fundraising Social: **Dec 9** | 8 PM in the music room

MURIELMARTINFUNDRAISING@GMAIL.COM

Join the Muriel Martin **Parent Community** Facebook group
facebook.com/groups/271444916334270/