



MM WEEKLY PARENT PLANNER

WEEK OF NOV 18-22



MONDAY	Metis Week Wings of Fire book Club - 12:05-12:35pm
TUESDAY	Gr. 6 Boys Volleyball Practice 12:05-12:35pm Glee Club Practice 12:05-12:35pm
WEDNESDAY	Gr. 6 Girls Volleyball Practice 12:05-12:35 Safe Spaces Club 12:05-12:35 Kinders Field Trip - St .Albert Visual Arts Studio Gr. 6 Girls Volleyball Game @ Ronald Harvey 4-5pm
THURSDAY	HOT LUNCH - Subway/Booster Juice Glee Club Practice -12:05-12:35 Gr.6 Boys Volleyball Practice - 12:05-12:35 Wings of Fire Book Club - 2nd recess Gr. 1's In school Field Trip - Teachers Pet Gr.6 Boys Volleyball Game @ Ronald Harvey 4-5pm
FRIDAY	Staff vs. Students - Volleyball game 12:05-12:35pm

Looking Ahead

Dec 2 - PD Day - NO SCHOOL

Contact Info



mm@spschools.org



780-458-0205

MM School Office Notices:

School Fees are now due, please log into your powerschool parent portal to see your balance owing and to pay online. The office will accept cash and cheques.

Please sign the MM Deer Ridge Waiver online, this is for students to walk around the neighborhood with their teacher/class. This is found under the fee section.

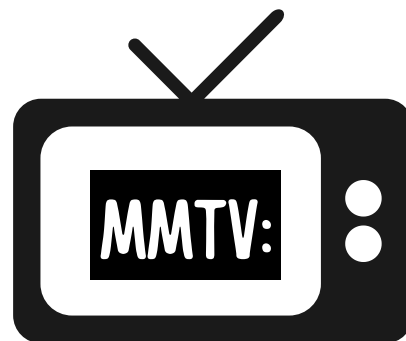
Please click on the link below to get into powerschool

[Powerschool Parent Portal Log in](#)

Poppy Campaign - Thank you from the St. Albert Royal Canadian Legion Branch #271, Muriel Martin contributed \$262.60

Waste free Lunches

The office will no longer be providing plastic cups or cutlery for students to use. Please make sure your student has packed a water bottle and the necessary utensils for their lunch.



Welcome to another year of MMTV! You can catch our weekly news on Mondays by subscribing to our [Muriel Martin TV Youtube](#) channel. Our news is hosted by our talented grade 6 students and produced by Mr. Grice.

Library Corner:

I would like to thank everyone who came out to support the Book Fair last week. It was another great success with \$13,400 in total sales resulting in \$5,000 in Scholastic Dollars that will buy books for our school. Also big thank you to all the wonderful volunteers that made this happen. This achievement could have not been done without you.



MM Musical Moments

The MM music website is ready to go and will always have the most up to date information for our music programming here at MM.

<https://sites.google.com/spschools.org/mmmusic/home>

Glee Club permission slips are due Friday Nov 22.

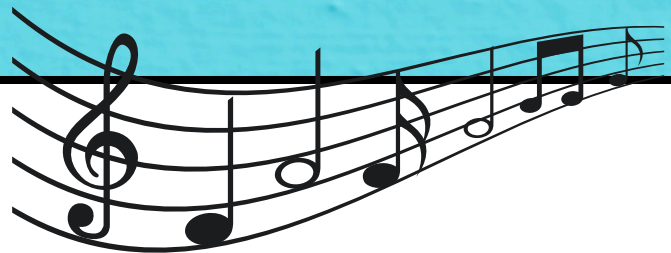
Some dates for all to note are:

January 23rd, 2025 - Grade 6 Band/Glee Club Winter Concert

March 15th, 2025 - Muriel Martin Oil Kings Night

April 17th, 2025 - Grade 6 Band/Glee Club Year End Concert

May 15th, 2025 - MM Showcase - More details to follow



Phys Ed News:

Gr. 6 Girls Volleyball Game - Nov 20 @ Ronald Harvey 4-5pm

Gr. 6 Boys Volleyball Game - Nov 21 @ Ronald Harvey 4-5pm

**Please come and cheer on your student, please pick up your student by 5pm at
Ronald Harvey School**



Cell Phones:

We would like to remind families that student cell phones or Smart watches are not to be used on the school property during the school day from beginning at 8:40 when supervision starts. This includes recess & lunch. When students bring these devices to school, they are expected to have them turned off and in their backpack / locker. Should your student need to contact you during the day, or you them, the school phone system is available. Please have this conversation with your student. Your cooperation and partnership are greatly appreciated.



Absence Reporting:

To report an absence, we prefer you use our online absence reporting form and fill it out with as much detail as possible. You can find it on the Muriel Martin Website or go directly to it using the following link

<https://murielmartin.spschools.org/parents/absence-reporting>

Late/Leaving Early

If your student is late please bring them to the office to be signed in. If you need to pick up your student during the day, please notify the office before you come. This way we can have your student ready and waiting. When you arrive at the school come into the office to sign them out. Please note, students are not allowed to walk home alone during school hours.

Parking:

Between 8 AM and 4 PM, please do not use the staff parking lot to drop off or pick up your student. There is plenty of parking in the neighborhood and around the school where you can park and walk your student to their designated door. The other option is to use our drop off / bus lane in front of the school. Please note, you should not be parking in the drop off / bus lane. This area is meant for students to quickly exit or enter your vehicle. Busses get priority in this lane, if you see them coming please make room for them as quickly as possible.

Accessible Parking: We have two designated accessible parking areas, one in the staff parking lot, and one in the drop off / bus lane. Only families who have handicap parking permits are allowed to use these areas.





Muriel Martin Get Involved!

NOVEMBER 15, 2024



SALISBURY AT ENJOY FUNDRAISER

Salisbury at Enjoy has something for everyone, from plants and décor to decorations and gift cards. When you purchase a \$25, \$50, \$100, or \$250 gift card, 20% of the value goes directly to support the school.

Visit HealthyHunger.ca to place your order and make a difference today!

Healthy
Hunger

**HOT
LUNCH!**



**SUBWAY & BOOSTER
JUICE ON NOV. 21
ORDER BY NOV. 16**



Fundraising Social: **Dec 9 | 8 PM** in the music room

MURIELMARTINFUNDRAISING@GMAIL.COM

Join the Muriel Martin Parent Community Facebook group
facebook.com/groups/271444916334270/