




MM WEEKLY PARENT PLANNER

WEEK OF NOV 11-15



MONDAY	Remembrance Day - No School 
TUESDAY	No School- Day in lieu of parent teacher interviews
WEDNESDAY	Gr. 6 Girls Volleyball Practice 12:05-12:35 Safe Spaces Club 12:05-12:35 Gr.5's - In school field trip - Teachers Pet Gr. 6 Girls Volleyball Game @ MM 4-5pm
THURSDAY	HOT LUNCH - Boston Pizza Glee Club Practice -12:05-12:35 Gr.6 Boys Volleyball Practice - 12:05-12:35 Wings of Fire Book Club - 2nd recess Gr.6 Boys Volleyball Game @ MM 4-5pm
FRIDAY	Kinders- In school Field Trip - Teachers Pet

Looking Ahead

NOV 18 - 22 - Metis Week

Contact Info



mm@spschools.org



780-458-0205

MM School Office Notices:

School Fees are now due, please log into your powerschool parent portal to see your balance owing and to pay online. The office will accept cash and cheques.

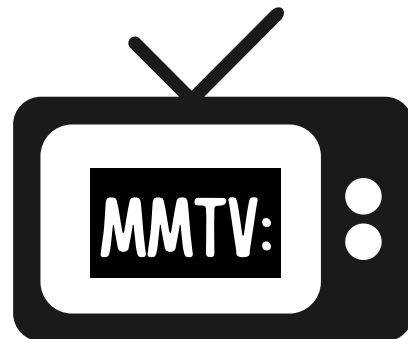
Please sign the MM Deer Ridge Waiver online, this is for students to walk around the neighborhood with their teacher/class. This is found under the fee section.

Please click on the link below to get into powerschool

[Powerschool Parent Portal Log in](#)

Waste free Lunches

The office will no longer be providing plastic cups or cutlery for students to use. Please make sure your student has packed a water bottle and the necessary utensils for their lunch.

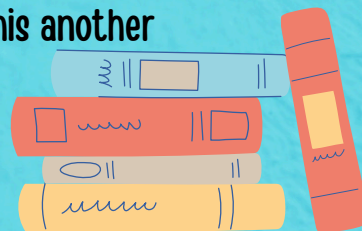


Welcome to another year of MMTV! You can catch our weekly news on Mondays by subscribing to our [Muriel Martin TV Youtube](#) channel. Our news is hosted by our talented grade 6 students and produced by Mr. Grice.

Library Corner:

Thank you for all your support, we had a great turn out for the
Scholastic Book Fair

Thank you to all our volunteers for all your help making this another
successful book fair!



MM Musical Moments

The MM music website is ready to go and will always have the most up to date information for our music programming here at MM.

<https://sites.google.com/spschools.org/mmmusic/home>

Please keep an eye out for Glee Club permission slips as they have been sent home as of today. If your child didn't get one and still wants to be part of Glee, you can find the permission slip under FORMS tab on the website above.

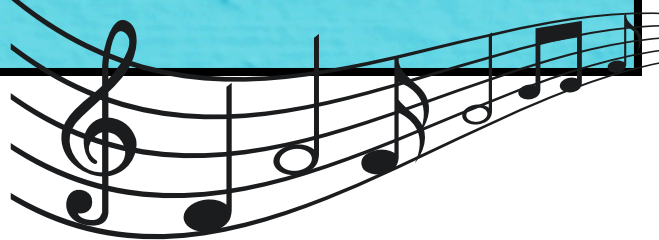
Some dates for all to note are:

January 23rd, 2025 - Grade 6 Band/Glee Club Winter Concert

March 15th, 2025 - Muriel Martin Oil Kings Night

April 17th, 2025 - Grade 6 Band/Glee Club Year End Concert

May 15th, 2025 - MM Showcase - More details to follow

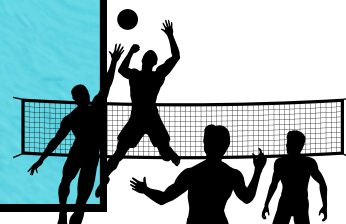


Phys Ed News:

Volleyball Games!

Gr. 6 Girls Volleyball Game - Nov 13 @ MM 4-5pm

Gr. 6 Boys Volleyball Game - Nov 14 @ MM 4-5pm



Cell Phones:

We would like to remind families that student cell phones or Smart watches are not to be used on the school property during the school day from beginning at 8:40 when supervision starts. This includes recess & lunch. When students bring these devices to school, they are expected to have them turned off and in their backpack / locker. Should your student need to contact you during the day, or you them, the school phone system is available. Please have this conversation with your student. Your cooperation and partnership are greatly appreciated.



Absence Reporting:

To report an absence, we prefer you use our online absence reporting form and fill it out with as much detail as possible. You can find it on the Muriel Martin Website or go directly to it using the following link

<https://murielmartin.spschools.org/parents/absence-reporting>

Late/Leaving Early

If your student is late please bring them to the office to be signed in. If you need to pick up your student during the day, please notify the office before you come. This way we can have your student ready and waiting. When you arrive at the school come into the office to sign them out. Please note, students are not allowed to walk home alone during school hours.

Parking:

Between 8 AM and 4 PM, please do not use the staff parking lot to drop off or pick up your student. There is plenty of parking in the neighborhood and around the school where you can park and walk your student to their designated door. The other option is to use our drop off / bus lane in front of the school. Please note, you should not be parking in the drop off / bus lane. This area is meant for students to quickly exit or enter your vehicle. Busses get priority in this lane, if you see them coming please make room for them as quickly as possible.

Accessible Parking: We have two designated accessible parking areas, one in the staff parking lot, and one in the drop off / bus lane. Only families who have handicap parking permits are allowed to use these areas.





Muriel Martin Get Involved!

NOVEMBER 8, 2024



SALISBURY AT ENJOY GIFT CARD FUNDRAISER

Get yourself ready for the **holiday season** while also helping out our school.

Purchase gift cards in \$25, \$50, \$100, or \$250 increments and the school receives **20%** of the value. Order now on [HealthyHunger.ca](https://www.healthyhunger.ca)

HOT LUNCH

Upcoming Orders

Boston Pizza on Nov. 14
Order by Nov. 9

NEED A HOLIDAY GIFT IDEA?

Order custom name stickers through Oliver's Labels!

Enter [oliverslabels.com/mmfs](https://www.oliverslabels.com/mmfs) (you must use the mmfs suffix), and **20%** of the value of your purchase will be returned to MMFS in commission.

Fundraising Social: **Dec 9** | 8 PM in the music room
MURIELMARTINFUNDRAISING@GMAIL.COM

Join the Muriel Martin **Parent Community** Facebook group
[facebook.com/groups/271444916334270/](https://www.facebook.com/groups/271444916334270/)